

HELEN LUNDEBERG: PAINTINGS, PRINTS, DRAWINGS

April 27 through June 10, 1981

The Tobey C. Moss Gallery has been graced by the calm, gentle presence of **Helen Lundeberg** (1908-1999) and her art throughout its thirty-year history. Works from Lundeberg's sixty year career have been featured in nine solo exhibitions at the gallery. We have enjoyed traveling through Helen's world, listening to her visual poetry and honoring her memory.

Lundeberg is truly a pioneer of California modernism. In 1934, Lundeberg and her husband, Lorser Feitelson, co-founded Post-Surrealism, the only organized reaction to Surrealism. She wrote the movement's manifesto, pronouncing, "Post Surrealism is concerned with the creation of order through introspection." In *Fantasy* (1948), we are awed by the mytery and the immensity of the cosmos.



Helen Lundeberg 1908-1999
Fantasy Oil on cardboard 1948
8 x 10 inches (20.3 x 25.4cm)
Jeri L. Waxenberg Collection

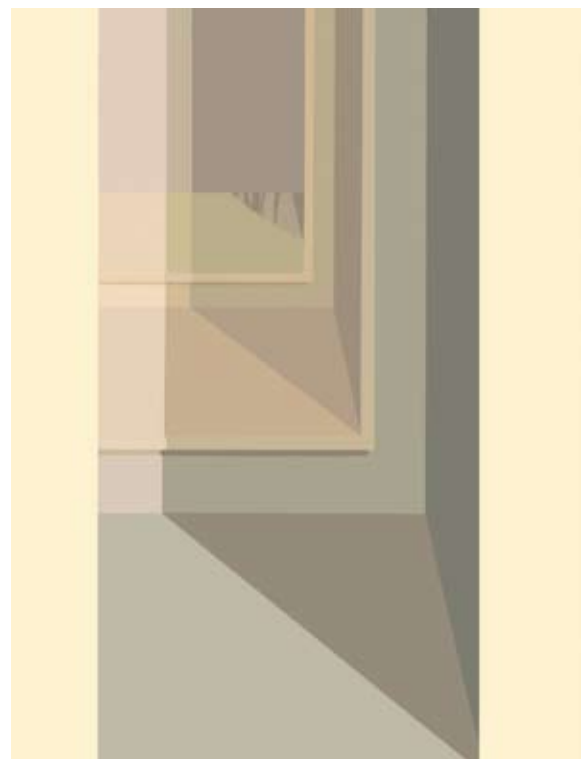
In the 1950's Lundeberg simplified her paintings. While perspective and shadow play a supportive role in the Lundeberg's Post Surrealist works, these visual elements take center stage in this next phase of the artist's career. She reduces architectural elements to pure geometric forms. The hard-edged minimalist paintings depict light and open, airy spaces that convey a true sense of calm and order.

From the 1960's to her death in 1999, Lundeberg continued her study of the world through a minimalist palette. She navigated through outer space, imposed structures, natural



Helen Lundeberg 1908-1999
Still Life in Landscape Acrylic on canvas 1974/78
20 x 25 inches (50.8 x 63.5cm)
Collection of Mr. and Mrs. Roy Turney

landscapes and artificial realms. Lundeberg dedicated her life to exploring space on a flat surface, and her paintings continue to encourage viewers to accompany her along the journey.



Helen Lundeberg 1908-1999
Grey Interior II Acrylic on canvas 1979
60 x 50 inches (152.4 x 127.0cm)
Steelcase, Inc. Collection



Helen Lundeberg 1908-1999
The Edge Oil on cardboard c.1951
16 x 20 inches (40.6 x 50.8cm)



Helen Lundeberg 1908-1999
Peaches Oil on board 1948
8 x 10 inches (20.3 x 25.4cm)